

## Western Pond

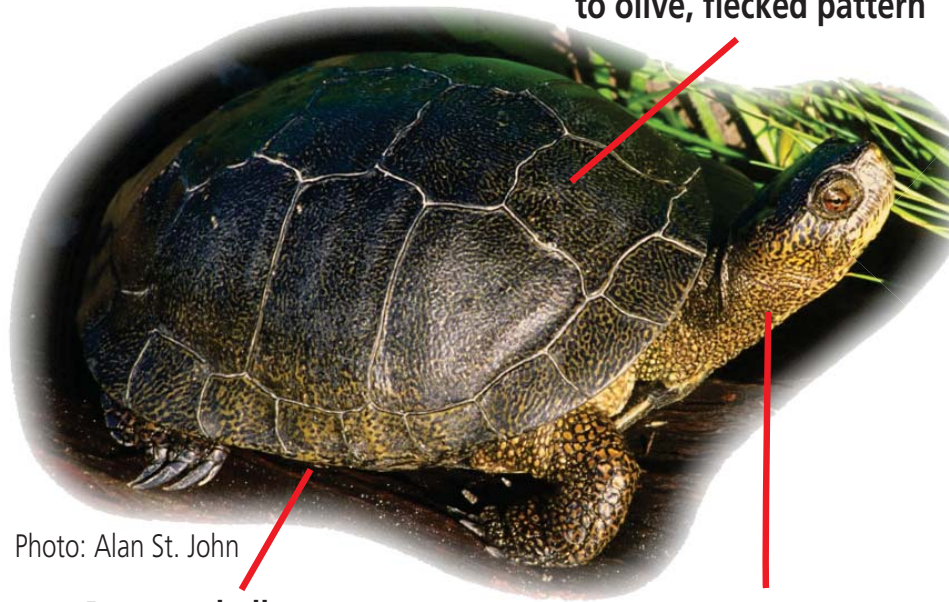


Photo: Alan St. John

Top shell dark brown to olive, flecked pattern

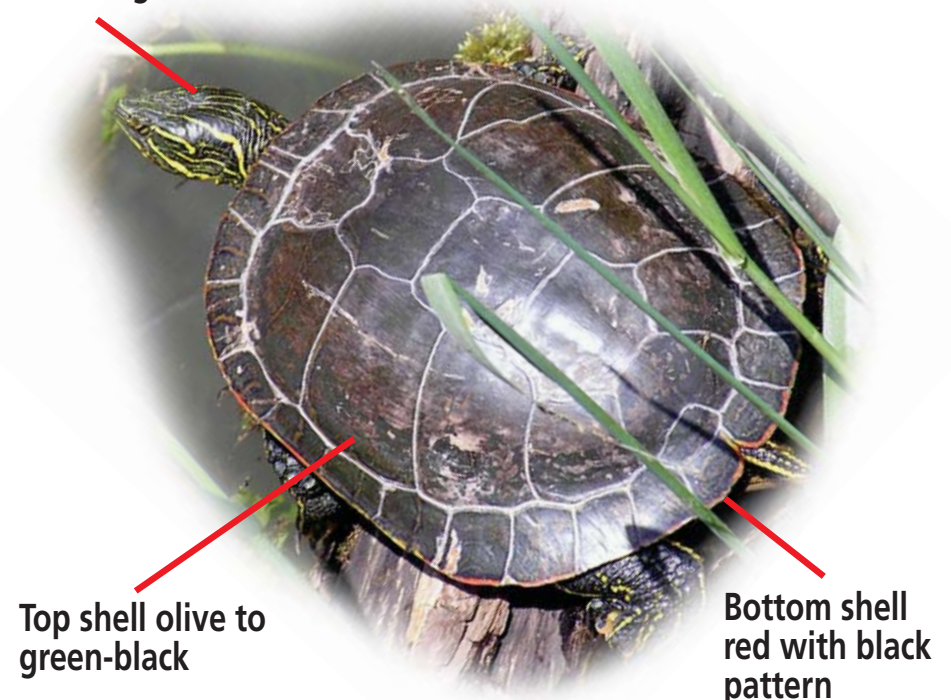
Bottom shell cream with dark blotches

Head, leg color same as top shell

- Found in ponds, lakes, rivers
- Digs nests in sunny dry soil, sparse vegetation
- Rests and over-winters in upland forest

Yellow stripes neck, head, legs

## Western Painted



Top shell olive to green-black

Bottom shell red with black pattern

- Prefers slow moving water, ponds, sloughs
- Digs nests in sunny dry soil, sparse vegetation
- Over-winters in mud in pond bottoms

**It is illegal to remove them from the wild, possess, transport or sell them.**